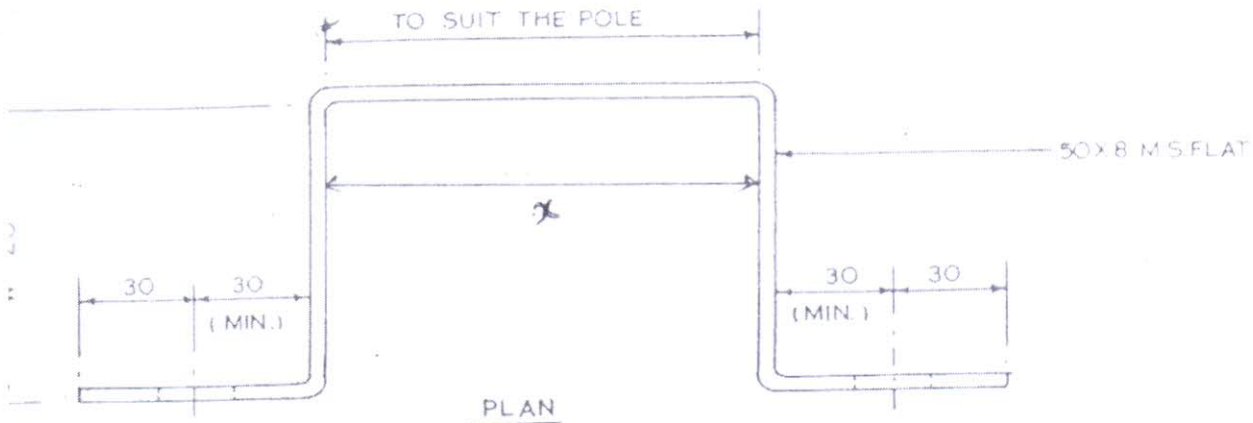


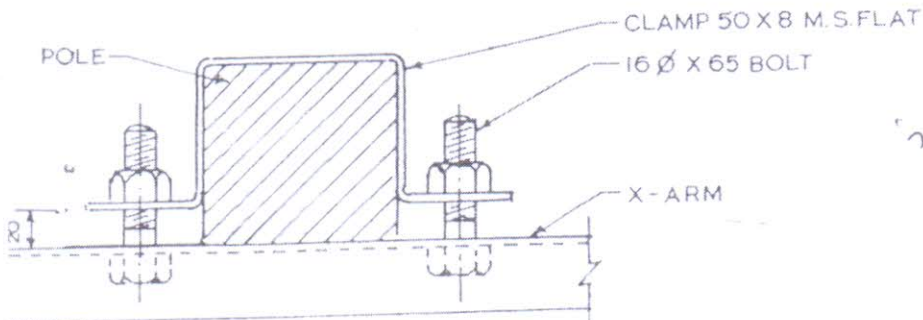
REC  
CONSTRUCTION STANDARD  
K-2



PLAN



ELEVATION



CLAMPS & X-ARM ASSEMBLY

$x = 172 \text{ mm}$  for  $8 \text{ m} \times 250 \text{ kg}$  Psc Pole  
 $= 210 \text{ mm}$  for  $9 \text{ m} \times 300 \text{ kg}/415 \text{ kg}$  Psc Pole

ALL DIMENSIONS ARE IN mm

क्रास-आर्म के लिए बैक क्लैम्प  
 11 KV  
 BACK CLAMP FOR X-ARM

X = WIDTH OF THE POLE

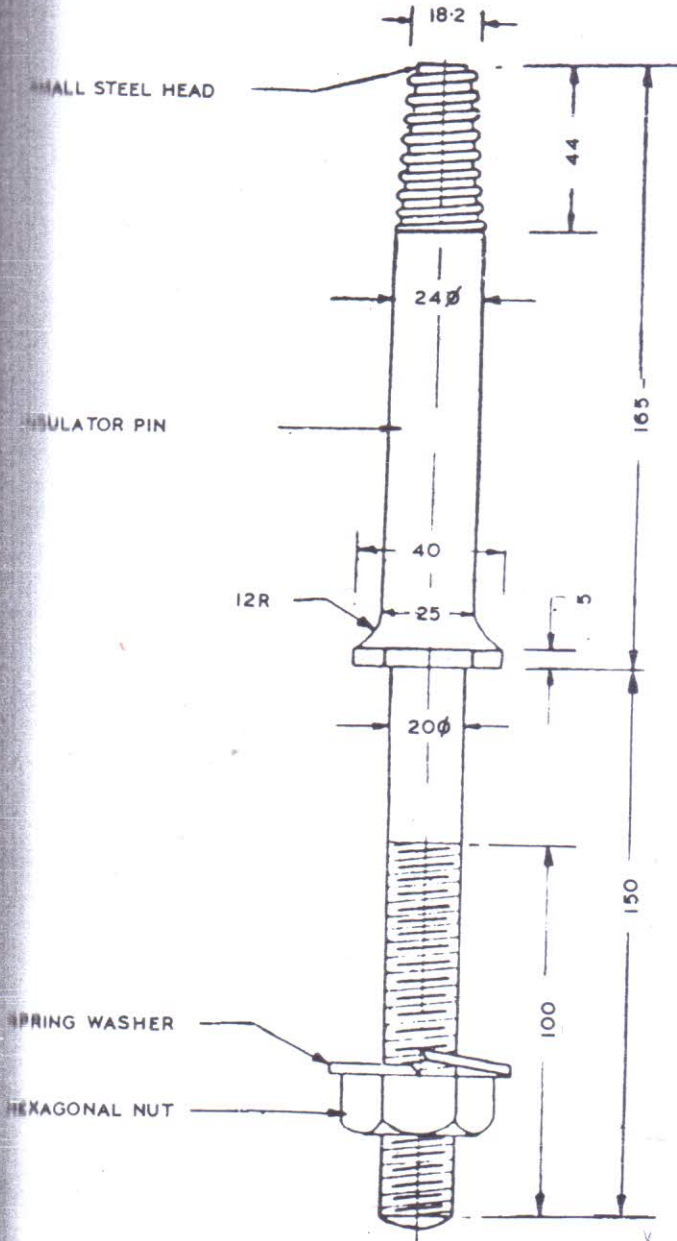
SCALE - N T S

SEPT - 1972

CONSTRU

TANDARD

C-1



## NOTES:-

1. PIN AS SHOWN SUITABLE FOR METAL CROSS ARM
2. FOR WOOD CROSS ARM INSTEAD OF SPRING WASHER, USE TWO SQUARE WASHERS 50X50X5 mm. ONE ON TOP AND THE OTHER AT BOTTOM

SPRING WASHER

HEXAGONAL NUT

ALL DIMENSIONS ARE IN mm.

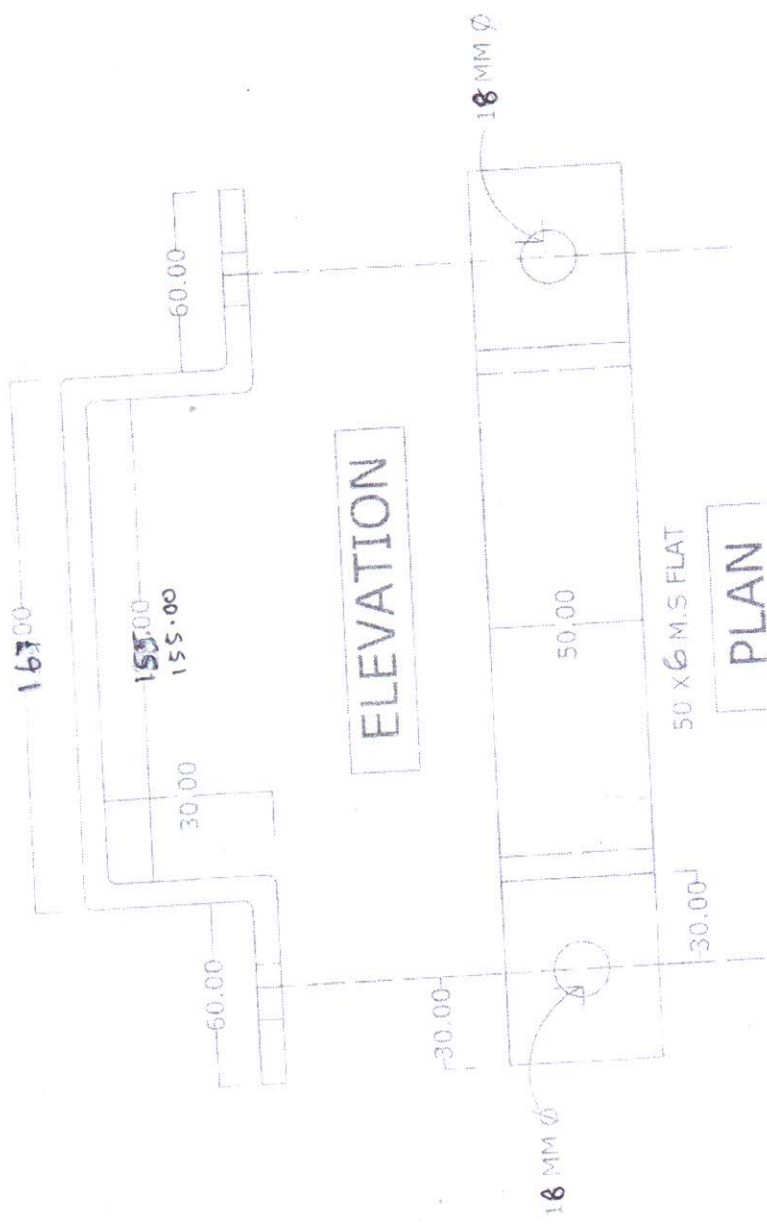
TYPE S 165  
IS:2486 (PART - II)

११ के० वी० विद्युत् रोधक व फिटिंग  
विद्युत् रोधक कीली

11KV INSULATORS & FITTINGS  
INSULATOR PIN

SCALE:- N.T.S

SEPT. - 1972



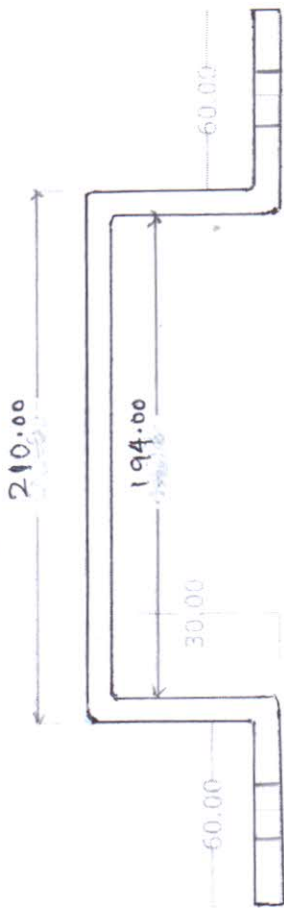
ELEVATION

PLAN

SIDE STAY CLAMP FOR LT PSC POLE (G.I)

ALL DIMENSION ARE IN MM. 8 mt psc pole

in Part



ELEVATION



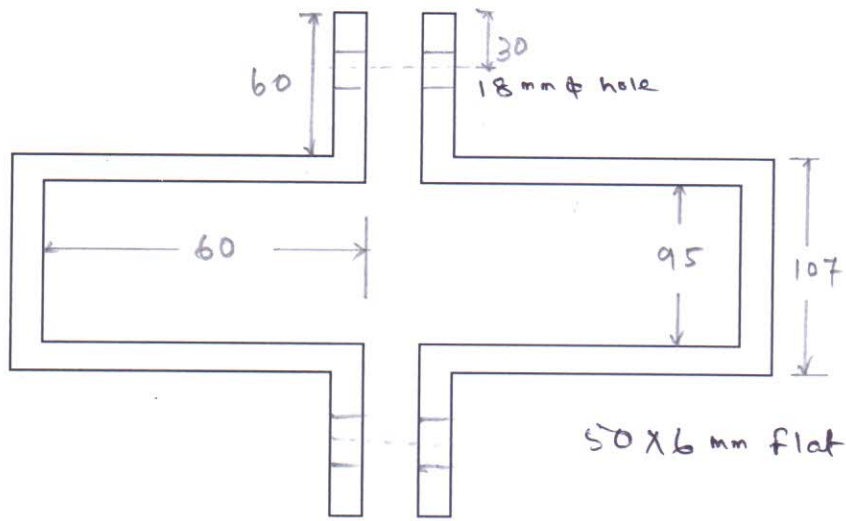
PLAN

50 X 8 M.S FLAT

SIDE STAY CLAMP FOR HT PSC POLE (G1)

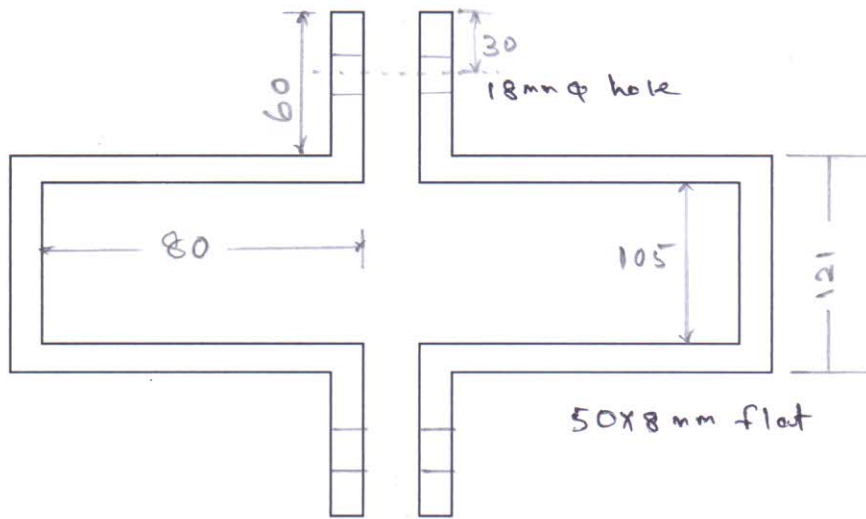
ALL DIMENSION ARE IN MM

9th Psc Pole



LT LINE STAY CLAMP FOR 8 MTR. PSC POLE (GI)

All dimension are in mm



HT LINE STAY CLAMP FOR 9 MTR. PSC POLE (GI)

All Dimension are in mm